

PEE-POD 500

Lightweight Remote Head for Film and TV



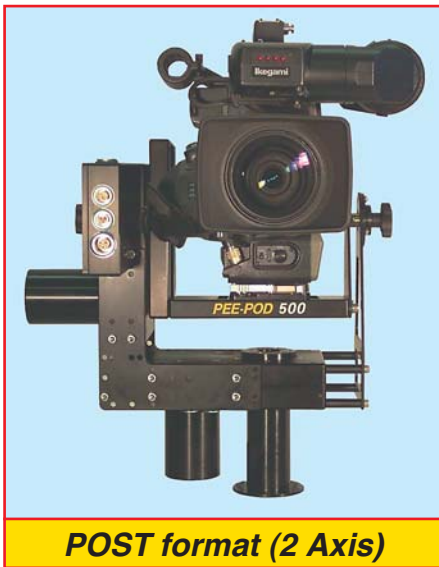
Joystick console



Pan bar control



One man operation



POST format (2 Axis)



JIB ARM Format (3 Axis)



JIB ARM Format (2 Axis)

PEE-POD 500

The **PEE-POD 500** is the latest exciting development to come from A&C's dedication to professional performance and innovative technology. This lightweight remote camera head with a large budget specification, boasts a low budget cost.

This new digital range of small remote heads uses an innovative lightweight gearbox, that is self-contained with Motor/encoder, reduction gear train and onboard electronics.

The system is hassle free without the need for perfect balancing and gives the operator a real edge when it comes to producing great shots, all the time.

Perfect for situations where either size or weight are restricted and without the need to sacrifice performance and reliability.

Capable of comfortably handling camera loads of up to 66 lbs (30 kg) the head can weigh as little as 11 lbs (5kg). Its weather resistant gearboxes have surprising power and impressive response giving it a superb level of performance, even when conditions are less than ideal; creating a system that performs like a "Mouse on Steroids".

- The gearbox weighs less than 4 lbs, is water resistant and will handle a camera load of up to 66 lbs. It has a maximum speed of less than 2 seconds for one revolution, with smooth precise movement.
- These gearboxes are universal, with the ability for any gearbox to be used for Pan, Tilt, or Roll.
- The cabling is delightfully simple with a single 3-core cable handling both power and data for the entire system if required. Long cable runs are not a problem, with the choice of having the operator miles from the remote head. A very reliable low cost RF option is available.
- A new generation of lightweight economic control desks manage the **PEE-POD 500** system. These new control desks start with a no frills unit, just controlling Pan/Tilt/Roll without displays or keypad and progressing to full memory playback with computer interface.
- We are offering the 500 in a lightweight crane jib format (with adapters for many popular lightweight Jib arms) and a tabletop or post format, but the options will not stop there.
- The system is simple enough for clients to buy some of the components and custom build their own configuration.

Options Include:

- | | | |
|----------------------|-------------------|----------------------|
| ● Multiple Heads | ● BNC Link | ● Computer Interface |
| ● Joystick | ● Mitchell Mount | ● Film Lens Control |
| ● Hand Wheels | ● Third Axis | ● RF Link |
| ● Adjustable Limits | ● Panbar | ● J JIB Mount |
| ● Video Lens Control | ● Memory Playback | |

FURTHER INFORMATION

We at A&C are constantly working on new accessories and improvements for the **PEE-POD** range of equipment. Please contact us for the latest information.

A&C LTD

83 Headstone Road, Harrow, Middlesex HA1 1PQ, UK.

Telephone: 44 (0)20 8427 5168 Fax: 44 (0)20 8861 2469

E.mail: frank@powerpod.co.uk

Web: www.powerpod.co.uk

The company supplies equipment materials and services only in accordance with its Conditions of Business. These conditions include clauses which exclude, limit or modify the liability of the company and provide for an indemnity from the customer in certain circumstances. Copies of our Conditions of Business are available on request.



Joystick console



Pan bar control



One man operation



POST format (2 Axis)



JIB ARM Format (3 Axis)



JIB ARM Format (2 Axis)



The **PEE-POD 500HD** is a professional light weight robotic camera head for TV & Film. It can carry Cameras of up to 30kg with a remarkable degree of precision and control. Specifically targeted at High Definition applications where high resolution of movement is critical.

- The **PEE-POD 500HD** is the high resolution successor to the standard **PEE-POD 500**.
- Having all of the successful features of the standard **PEE-POD 500**, see overleaf, this enhanced version boasts some formidable extras.
- New 'POD-POWER' servo drive with intelligent power management to further increased the already impressive torque output by 30%.
- Motor temperature monitoring that profiles current parameters.
- High resolution output gives about 4 million steps per revolution of gearbox.
- Gearbox parameters & software can be changed via serial link.
- Even quieter than the standard **PEE-POD 500**.
- Next generation anti-backlash system.

PEE-POD 500HD

Lightweight Remote Head for Film and TV

PEE-POD 500HD

Lightweight Remote Head for Film and TV

Our new digital range of small remote heads uses a innovative lightweight gearbox, that is self-contained with Motor/encoder, reduction gear train and onboard electronics.

The system is hassle free without the need for perfect balancing and gives the operator a real edge when it comes to producing great shots, all the time.

Perfect for situations where either size or weight are restricted and without the need to sacrifice performance and reliability.

Capable of comfortably handling camera loads of up to 30kg, the head can weigh as little as 5kg. Its weather resistant gearboxes have surprising power and impressive response giving it a superb level of performance, even when conditions are less than ideal; creating a system that performs like a 'mouse on steroids'.

- The gearbox weighs less than 1.8kg, is water resistant and will handle a camera load of up to 30kg. It has a maximum speed of less than 2 seconds for one revolution, with smooth precise movement.
- These gearboxes are universal, with the ability for any gearbox to be used for Pan, Tilt, or Roll.
- The cabling is delightfully simple with a single 3-core cable handling both power and data for the entire system if required. Long cable runs are not a problem, with the choice of having the operator miles from the remote head. A very reliable low cost RF option is available.
- A new generation of lightweight economic control desks manage the PEE-POD 500 system. These new control desks start with a no frills unit, just controlling Pan/Tilt/Roll without displays or keypad and progressing to full memory playback with computer interface.



Options include:

- Multiple Heads
- Joystick
- Hand wheels
- Adjustable limits
- Video lens control
- BNC link
- Mitchell Mount
- Third Axis
- Panbar
- Memory Playback
- Computer Interface
- Film lens control
- RF link
- J JIB Mount

FURTHER INFORMATION

A&C is an Academy award winning manufacturer of robotic camera heads of over twenty years of experience. Our continual program of research and development has resulted in the production of many robotic systems that have come to be regarded as industry standards. As we are constantly developing and evolving our systems, please check our website for the latest specifications.

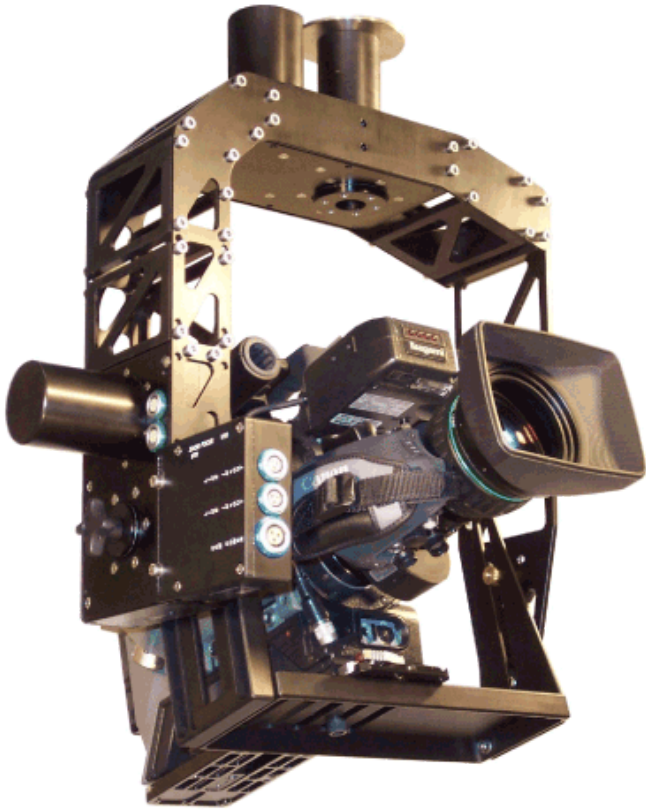
A&C LTD

83 Headstone Road, Harrow, Middlesex HA1 1PQ, UK.
Telephone: 44 (0)20 8427 5168 Fax: 44 (0)20 8861 2469
E.mail: frank@powerpod.co.uk
Web: www.powerpod.co.uk

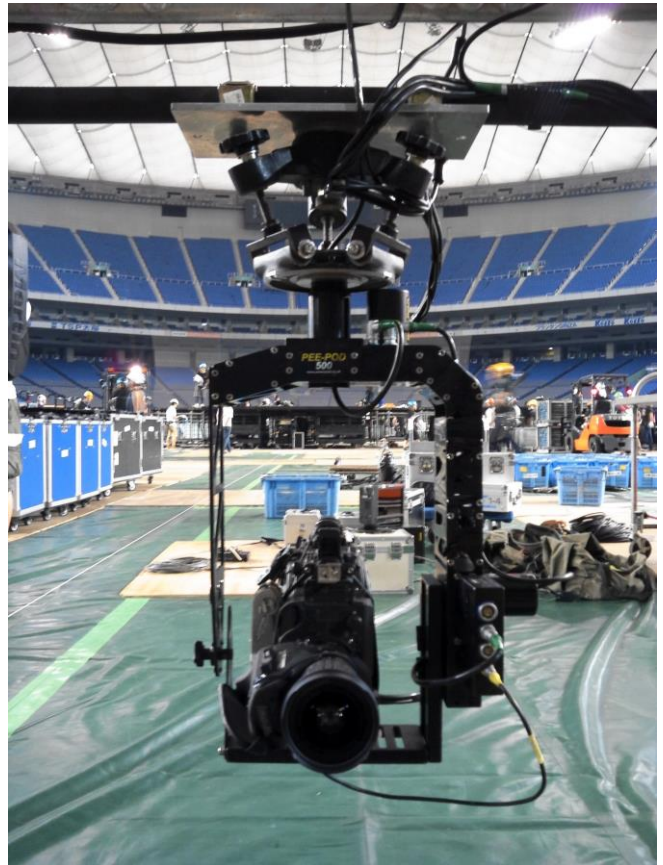
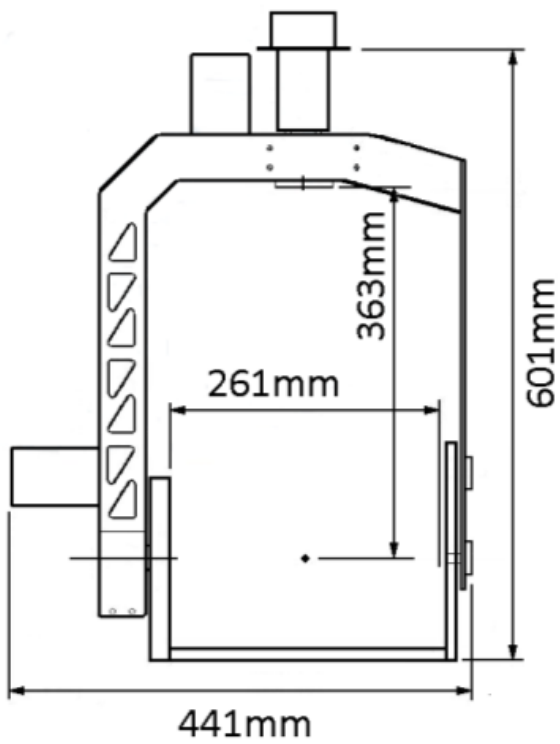
The company supplies equipment materials and services only in accordance with its Conditions of Business. These conditions include clauses which exclude, limit or modify the liability of the company and provide for an indemnity from the customer in certain circumstances. Copies of our Conditions of Business are available on request.



PEE-POD 500 HD



601 × 441 mm 8 kg

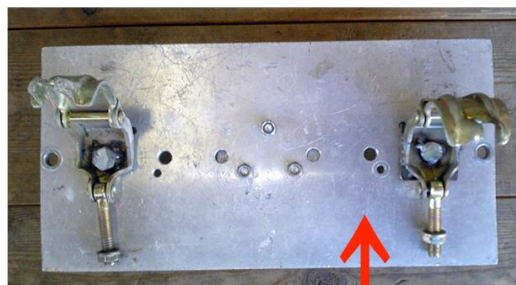


天吊りカメラ資料

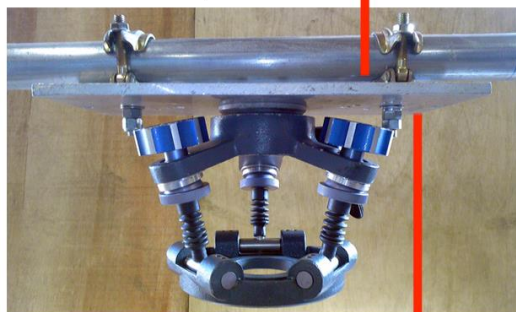
■設置例



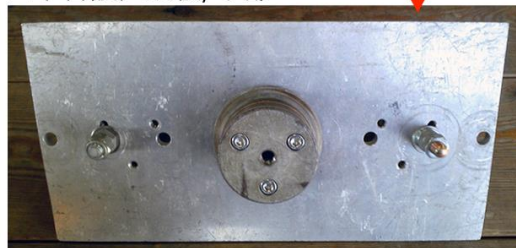
200×400 mm



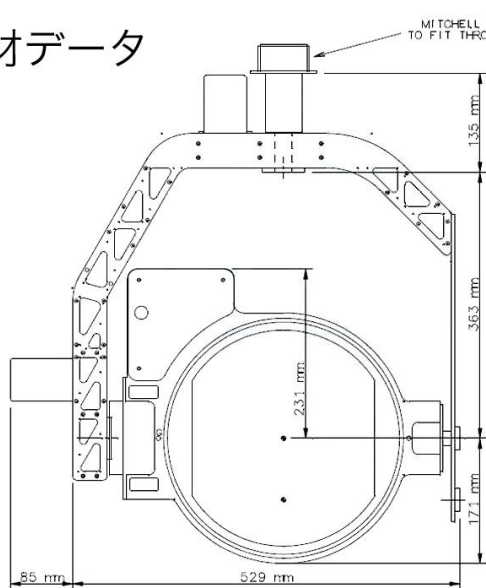
□単管設置鉄板/上部



□単管設置鉄板/下部



■機材データ



WEIGHT OF HEAD IN THIS FORMAT 22. lbs (10 kg)

